

Migratory connectivity analysis

by EURING Migration Atlas

Phoenicurus ochruros (EURING code 11210)

1.1 Connectivity between individuals

The analysis evaluated 306 individuals (612 encounters) filtered from a total of 26766 records in the EURING databank which were considered for the Atlas. The species shows a significant connectivity from clustering, with a number of first-level clusters = 2 (Table 11210-1; Figure 11210-1).

Table 11210-1. Results from the migratory connectivity analysis. For each cluster, the degree of connectivity (r_M), its statistical significance (p-value) and 95% confidence interval limits are shown. When the p-value is less than or equal to 0.1, the degree of clustering structure (oasw) and the best number of clusters identified are reported.

| Cluster name | Level of clustering | N individuals | Migratory connectivity (r_M) | p-value | Lower 95% confidence limit | Upper 95% confidence limit | Best number of clusters | oasw |
|--------------|---------------------|---------------|----------------------------------|---------|----------------------------|----------------------------|-------------------------|-------|
| 0 | 0 | 306 | 0.156 | 0.003 | 0.092 | 0.246 | 2 | 0.579 |
| 1 | 1 | 276 | 0.099 | 0.004 | 0.027 | 0.185 | 2 | 0.384 |
| 2 | 1 | 30 | 0.093 | 0.206 | -0.023 | 0.358 | - | - |

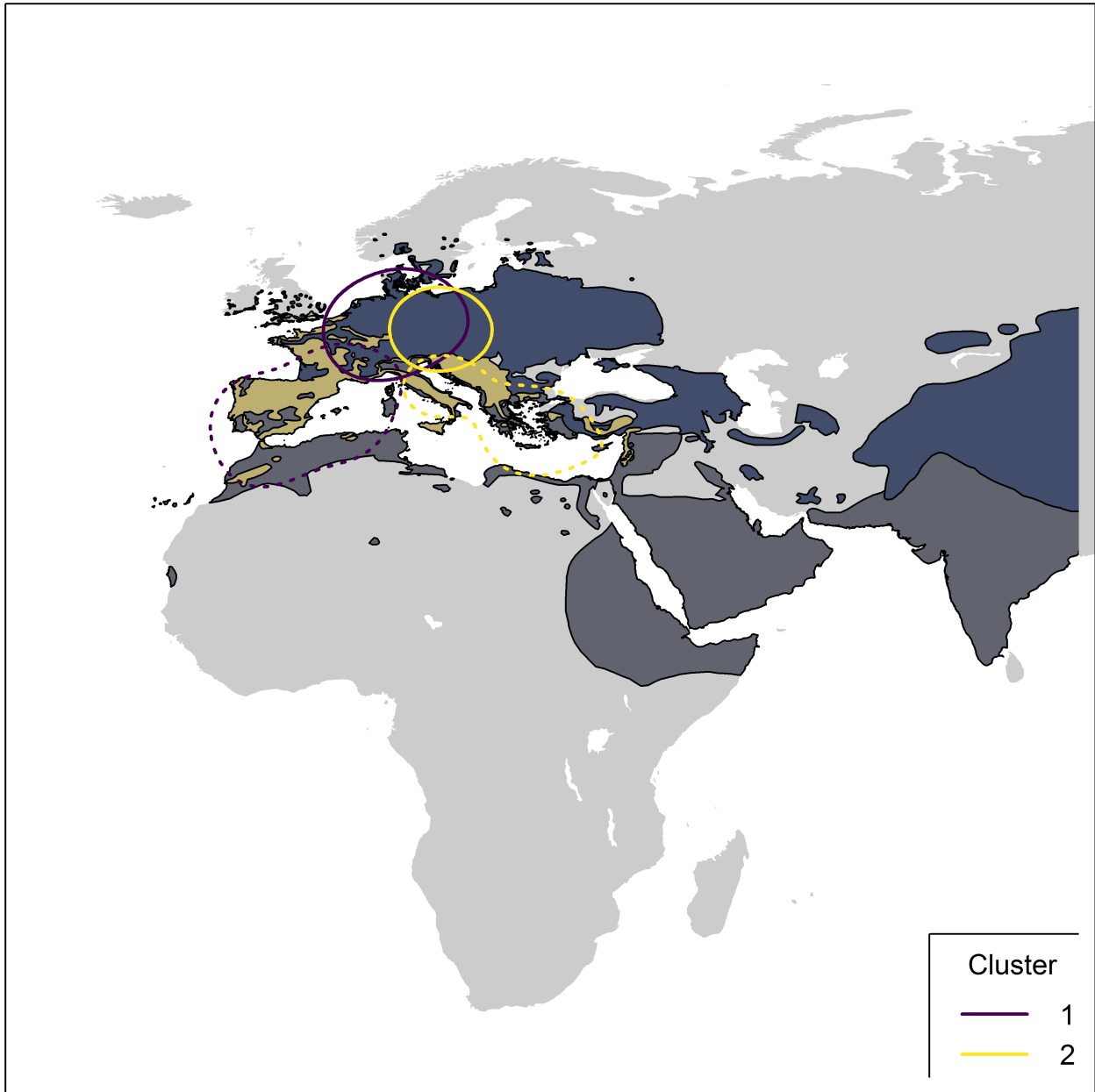


Figure 11210-1. Map showing 95% kernel contours of of first-level clusters identified by the migratory connectivity analysis, if any, or 95% kernel contours of all encounters, in case of no clustering structure. Solid lines indicate the clusters in the breeding range, dotted lines those in the non-breeding range. Different contour colours correspond to different clusters, as reported in legend. The species distribution range is also shown (breeding range: blue; non-breeding range: dark grey; resident range: beige; from BirdLife International, 2019).

1.2 Sensitivity analysis

Results of power analysis and validation. Analyses at the species level were re-run on subsamples of individuals of decreasing size (100 repetitions per subsample size), according to simple random sampling of individuals (Figure 11210-2) and stratified sampling of individuals within the breeding range (Figure 11210-3) and the non breeding range (Figure 11210-4). For stratified sampling, we selected individuals with a

probability inversely proportional to the number of observation in each country. Figures below report the results of the procedure.

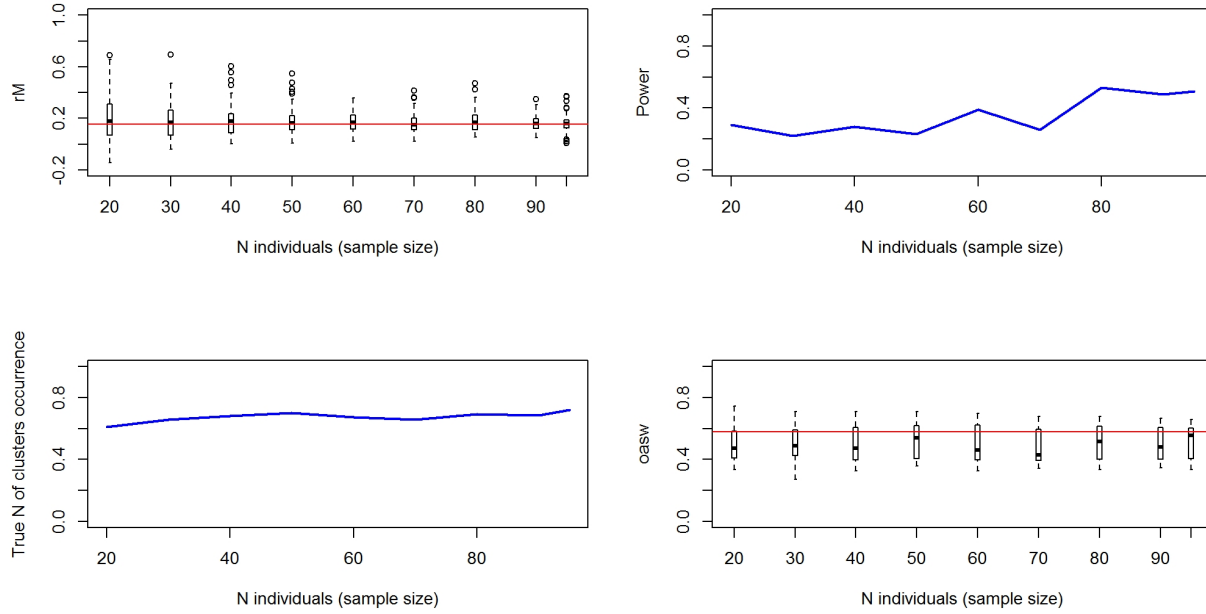


Figure 11210-2. Top left: simulated distribution (boxplots) and observed value (red line) of connectivity. Top right: Simulated power of the analysis (i.e. proportion of times the analyses on the subset of individuals was significant). Bottom left: Proportion of times the analysis provides the observed best number of cluster. Bottom right: simulated distribution (boxplots) and observed value (red line) of clustering intensity.

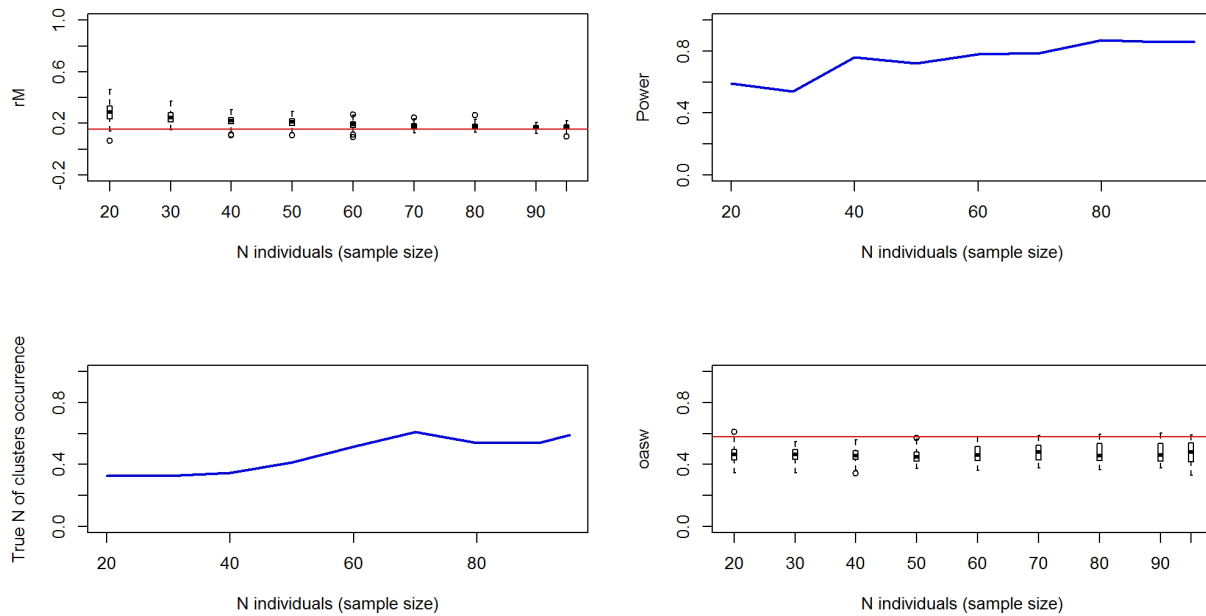


Figure 11210-3. Top left: simulated distribution (boxplots) and observed value (red line) of connectivity. Top right: Simulated power of the analysis. Bottom left: Proportion of times the analysis provides the

observed best number of cluster. Bottom right: simulated distribution (boxplots) and observed value (red line) of clustering intensity.

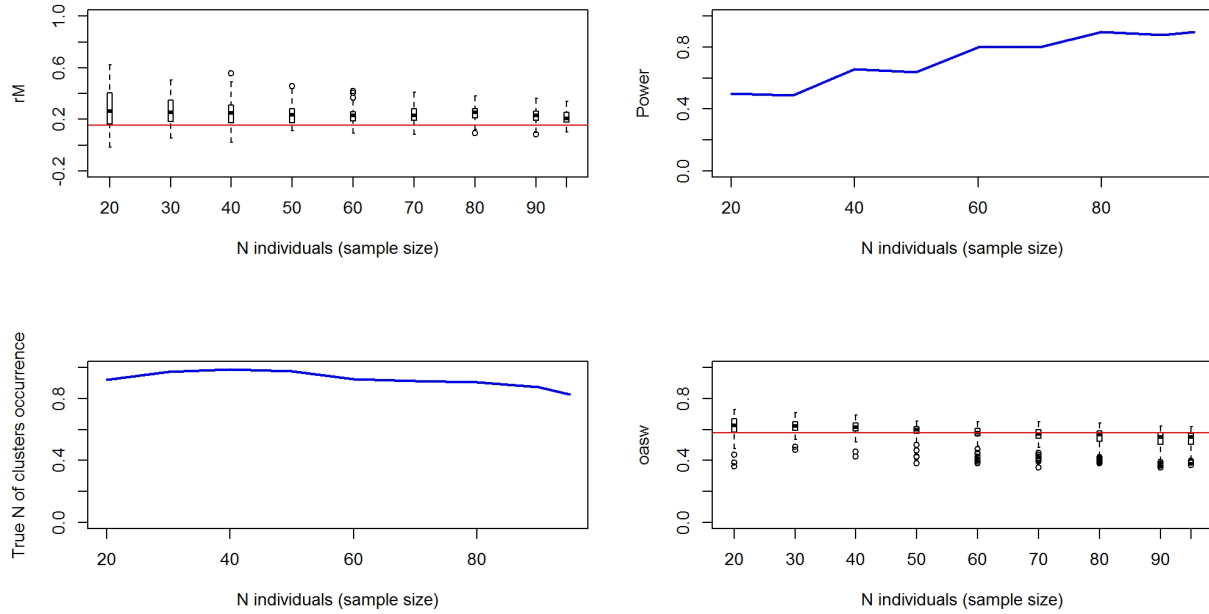


Figure 11210-4. Top left: simulated distribution (boxplots) and observed value (red line) of connectivity. Top right: Simulated power of the analysis. Bottom left: Proportion of times the analysis provides the observed best number of cluster. Bottom right: simulated distribution (boxplots) and observed value (red line) of clustering intensity.

The comparison between the bootstrapped distribution of r_M values from live recaptures and dead recoveries is not significant ($p = 0.057$); Figure 11210-5).

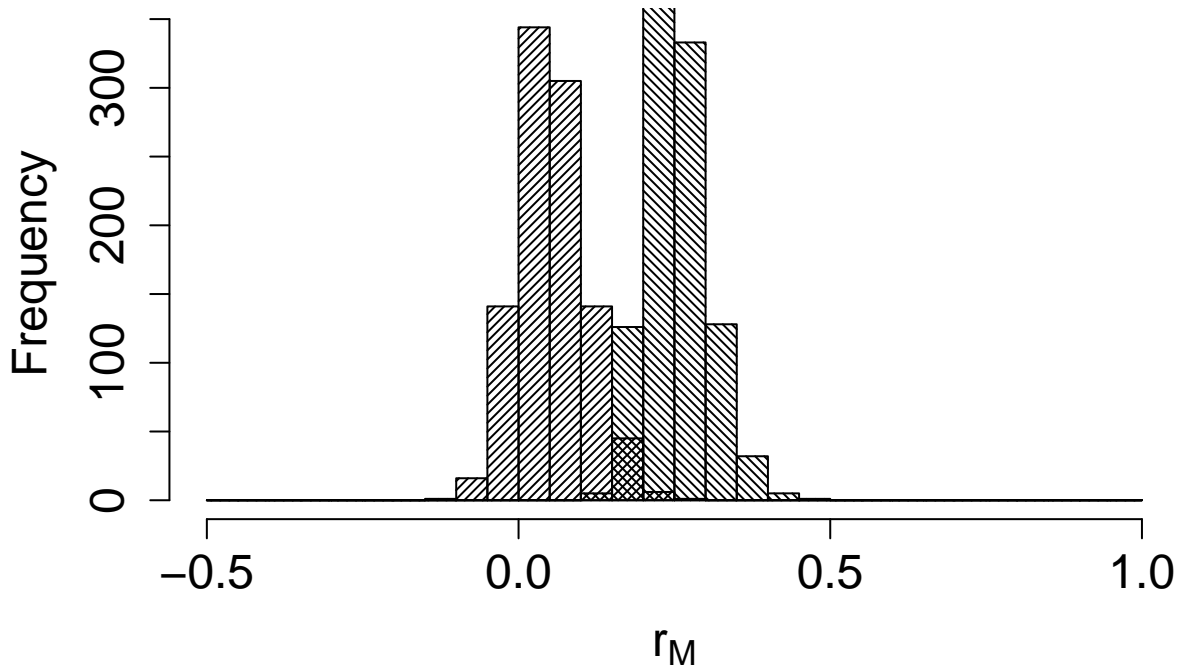


Figure 11210-5. Comparison between the bootstrapped distributions of connectivity value for alive recaptures (filling lines with angle=45°) and dead recoveries (filling lines with angle=375°).

2. Connectivity between pre-defined regions

The species shows low/moderate connectivity ($MC = 0.233$; $MC = 0.231$ when adjusted for absolute abundance) between 6 breeding regions and 6 non breeding regions (Table 11210-2; Figure 11210-6).

Table 11210-2. Transition probabilities between pre-defined regions. Estimated abundance (number of individuals) in each breeding region is also reported.

| Breeding region | Abundance | Non breeding region | Transition probability |
|----------------------|-----------|----------------------|------------------------|
| Central Europe | 6803800 | Arabian peninsula | 0.004 |
| Central Europe | 6803800 | North Africa | 0.140 |
| Central Europe | 6803800 | South-central Europe | 0.091 |
| Central Europe | 6803800 | South-east Europe | 0.078 |
| Central Europe | 6803800 | South-west Europe | 0.667 |
| Central Europe | 6803800 | West Europe | 0.021 |
| East Europe | 1158920 | South-east Europe | 1.000 |
| North Europe | 2690 | South-west Europe | 0.500 |
| North Europe | 2690 | West Europe | 0.500 |
| South-central Europe | 1045964 | South-central Europe | 1.000 |
| South-west Europe | 2479954 | North Africa | 0.167 |
| South-west Europe | 2479954 | South-west Europe | 0.833 |
| West Europe | 1216675 | North Africa | 0.298 |

| Breeding region | Abundance | Non breeding region | Transition probability |
|-----------------|-----------|----------------------|------------------------|
| West Europe | 1216675 | South-central Europe | 0.021 |
| West Europe | 1216675 | South-west Europe | 0.681 |

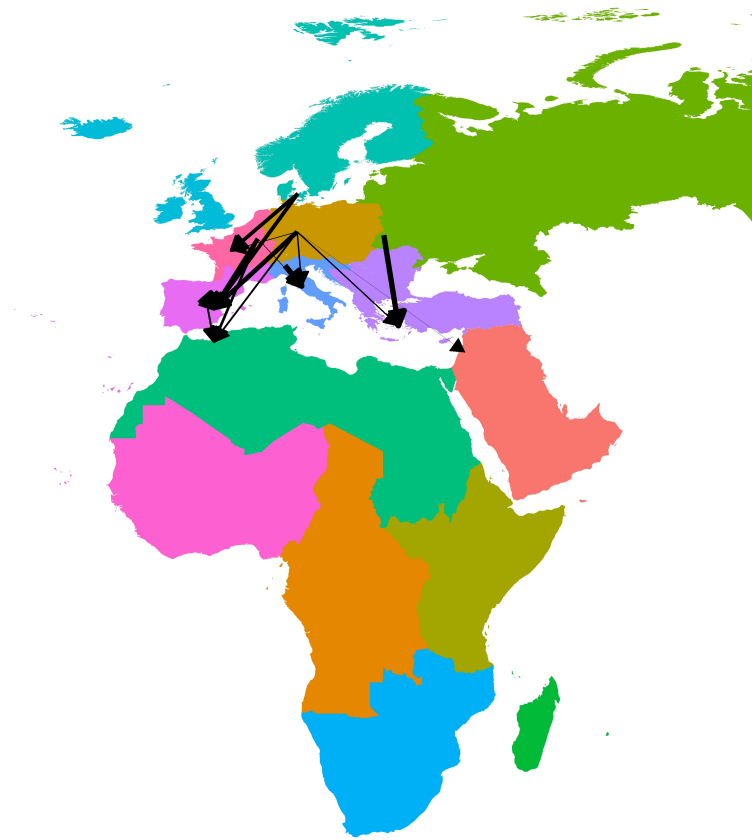


Figure 11210-6. Map showing pre-defined regions in different colours, with black arrows linking centroids of individual encounters in different regions. Arrow width is proportional to transition probability.

Reference

BirdLife International and Handbook of the Birds of the World (2019). Bird species distribution maps of the world. Version 2019.1. Available at <http://datazone.birdlife.org/species/requestdis>.